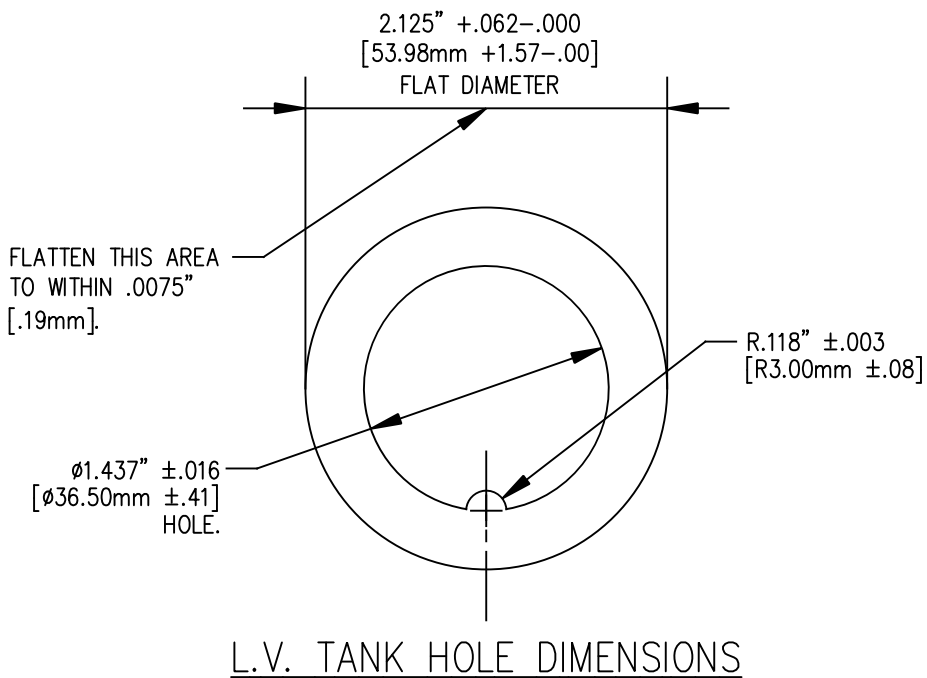


REVISIONS					
NO.	DATE	ECN #	REMARKS	BY	APPD.
1	2-19-97		REMOVED PORCELAIN NOTE AND ADDED ZINC PLATED TO STEEL WASHER	BTD	LHE
2	11-29-99		EDITED DIMENSIONS.	CJT	LHE
3	1-14-02	HJ01-231	REMOVED TORQUE NOTE.	CJT	LHE
4	10-30-15	HJ14-269	Ø1.38 REF. WAS Ø1.39	CLS	BLB



MATERIAL:  
 STUD - COPPER CDA 11000  
 BODY - CDA 84400 TIN PLATED  
 EYEBOLT - CDA 95500 TIN PLATED

TOLERANCES (EXCEPT AS NOTED)	
DECIMAL	± .032\"/>
FRACTIONAL	±
ANGULAR	± 2°



**H-J ENTERPRISES, INC.**  
 3010 HIGH RIDGE BLVD. HIGH RIDGE, MO. 63049 USA  
 PHONE 1-636-677-3421 FAX 1-636-376-1915

**50 KVA L.V. BUSHING ASSEMBLY  
 NON-PORCELAIN INSULATOR**

MATERIAL (SEE ABOVE)

CHK'D	APP'D	DRAWING NO.
		AS1002-004

DRAWN BY TLH DATE 3-29-96 SCALE N.T.S.